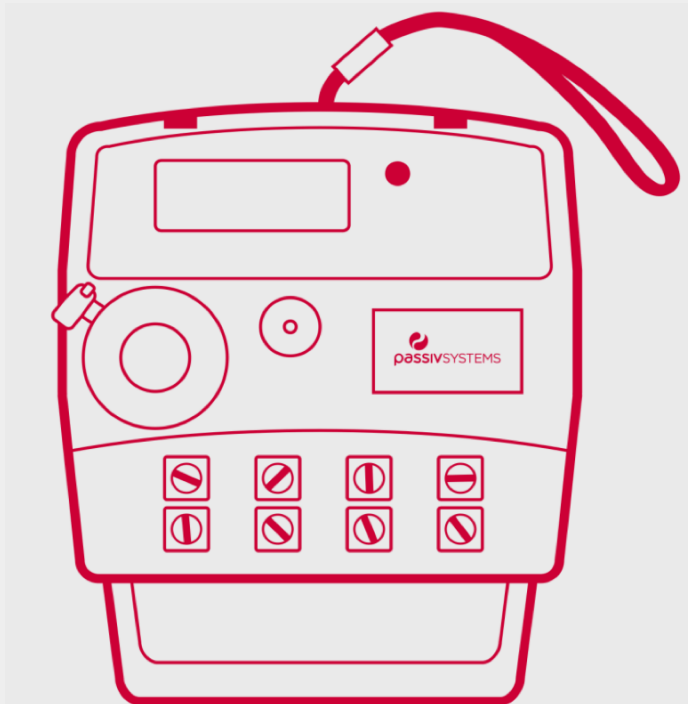


Putting performance insight online

ICM Electricity Meter – Product ID: AS230-BM

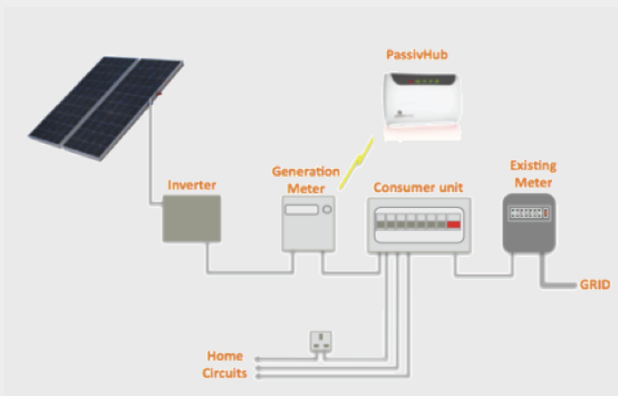


Component snapshot

The PassivEnergy™ electricity meter is a digital meter that measures solar PV generation, heat pump consumption and general electricity consumption in single phase installations. This not only makes it a widely accepted and affordable option for residential electricity metering but through the inbuilt secure mesh radio link communication module, this meter also enables wireless communication over a ZigBee wireless mesh network. The meter is supplied with security options to avoid physical tampering, data corruption and unauthenticated access. The meter continuously monitors the status of the real time clock, non-volatile memory and battery conditions.

Integrating with PassivEnergy™

Our meter works with the PassivHub, which then passes data to PassivLiving, our monitoring and control interface using the home's existing broadband. Consumers can also select to purchase the PassivController, a handheld touch-screen display that provides 'in the moment' generation information and a history of the day's electricity generation.



Typical solar PV monitoring service components

The home's heartbeat online

PassivLiving™ is a best-in-class monitoring and control dashboard that gives our professional partners unique diagnostic insight into the performance of solar PV systems within the home. Access to PassivLiving™ is offered to our commercial partners on an annual subscription basis, unless specifically agreed otherwise. Depending on the nature of the offer, our commercial partners can also offer consumers access to PassivLiving™. Subscriptions vary between 12 months and 25 years.



Certification

CE and MID approved

Warranty

The PassivEnergy™ electricity meter is warranted for 1 year from the date of installation or from 14 months from date of delivery (whichever is sooner), unless expressly agreed otherwise.

Failed units will be replaced as per PassivSystems RMA process.

Re-installation is the responsibility of the commercial partner.

Additional information

PassivSystems reserves the right to make changes to its products from time-to-time without notice.

When contracting with consumers, our commercial partners are responsible for seeking the home occupant's approval of privacy terms – an example of recommended privacy terms are available upon request.

Technical detail

Dimensions:	135 x 169 x 70 mm (width x height x depth)
Base and Cover:	High Grade, fire resistant engineering plastic
Weight:	650 g
Mounting:	Wall mounted, indoor
Terminal:	Cage clamp type
Electrical Connection:	2 Wire (P-N)
Rated Voltage:	230V, -40% to +30%
Current Rating:	Standard; 0.5-10 (100) A; Minimum Current 0.5A.
Reference Current:	10A, Maximum Current 100A
Frequency:	50 Hz +/-5%
Degree of Protection	IP51
Activity indicator:	High intensity red LED for calibration and testing
Accuracy:	Class B
Communication:	IEC1107 optical port for local and remote communications
Climate:	Operating -40° to 70°C
Humidity:	95% Non condensing
Mechanical:	Vibration and Shock, as per IEC standard and Category "M1" as per EN standard
Electromagnetic	As per IEC standard and category "E1" as per EN Standard