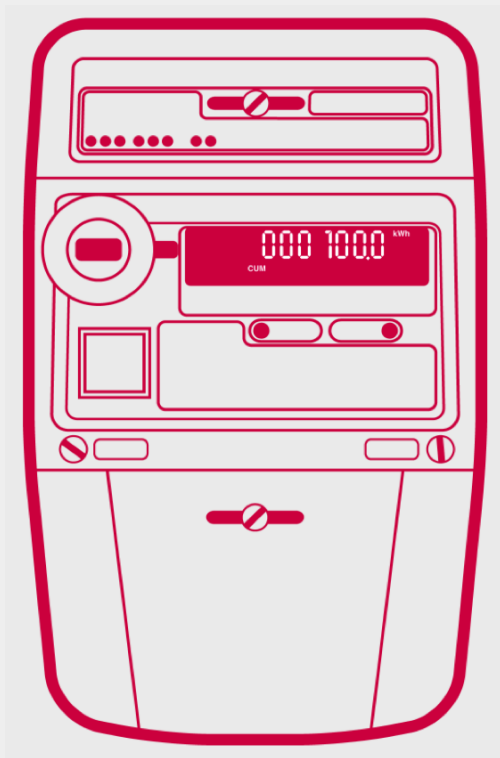


# Remote meter readings at time periods to suit you

AS230 Electricity Meter – Product ID: PL-GSM-001



## Included in Package

- GSM Meter and Communications Module
- SIM, pre-selected by the Commercial Partner and fitted before installing

## Minimum Requirements

- Subscription to the PassivEnergy™ Solar PV GSM monitoring service.
- Availability of a suitable GSM service from the range of suppliers satisfactory for the location of the meter.

## Reporting options

- Daily
- Weekly

## Component snapshot

The PassivEnergy™ GSM electricity meter is designed for properties without an internet connection or properties with high occupancy turn-over which could result in intermittent internet connectivity. It uses GSM to provide electricity generation data at intervals agreed as part of the PassivEnergy™ monitoring service – either half-hourly readings supplied once every 24 hours or a single reading supplied once every 7 days.

## Integrating with PassivEnergy™

The PassivEnergy™ GSM electricity meter comprises 3 components - a CE and MID approved meter, a GSM/GPRS communications module and a SIM card. It has a self contained SIM, which will be provided by PassivSystems from a number of network providers, according to the needs of the location.

## Certification

- CE and MID approved
- Accuracy Class kWh: EC Directive 2004/22/EC (MID) Class A or Class B (EN 50470-3) IEC 62053-21, Class 1 or Class 2
- Accuracy Class kvarh: Class 2 or Class 3 – EN 62053-23

## Warranty

All 3 components of the GSM meter are warranted for 1 year from the date of installation or from 14 months from date of delivery (whichever is sooner), unless expressly agreed otherwise.

Failed units will be replaced as per PassivSystems RMA process.

Re-installation is the responsibility of the commercial partner.

## Technical detail

### The AS230 Meter

<b>Current IEC Ratings:</b>	20-100A, 10-100A, 5-100A (Ib-I <sub>max</sub> )
<b>MID/EN Rating:</b>	1-20 (100)A, 0.5 – 10 (100A), 0.25 – 5 (100)A [I <sub>min</sub> -I <sub>ref</sub> (I <sub>max</sub> )]
<b>Frequency:</b>	50 Hz
<b>Reference Voltage:</b>	220V – 240V
<b>Voltage operating range:</b>	+/- 20%
<b>Short Circuit Current:</b>	3000A/one half cycle
<b>Burden of Voltage Circuit 230V:</b>	9VA, 1.4W (without module fitted)
<b>Burden of Current circuit:</b>	10-100A meter 0.02VA at 5A
<b>Insulation:</b>	4kV AC Voltage
<b>Impulse withstand:</b>	8kV (40 Ohm source) 6kV (2 Ohm source)
<b>Over Voltage (phase neutral)</b>	√3X1.1 U <sub>ref</sub> (i.e. 440v for 230v meters for 12 hrs).
<b>Display:</b>	9.8mm characters high contrast, wide viewing
<b>Meter Constant:</b>	Pulse LED output: 2000, exceptional 1000 p/kWh (kvarh)
<b>SO Output (8 kV isolation)</b>	27V dc 27mA, IEC 62053-31 (Transistor Output)
<b>Product Design Life:</b>	20 years
<b>Certified Product Life:</b>	15 years
<b>Temperature:</b>	Operational: -25°C to +65°C, Storage: -25°C to +80°C
<b>Humidity:</b>	Non condensing: Annual mean 75% (95% for 30 days spread over 1 year)
<b>Max Dimensions:</b>	(Long terminal) BS Meter 219mm (h) 132mm (w) 65mm (d) (short terminal) BS Meter 170mm (h) 132mm (w) 65mm (d)
<b>Weight:</b>	785 grams with typical module fitted
<b>Terminals Main:</b>	BS Meter 8.0mm cable entry, M6 (x2) terminal screws –max torque 2.8N m

### ASL Holdings AS230 compatible – GSM Wireless Modem

<b>Data rates and standards:</b>	V22 (1200bps), V22bis (2400bps), V32 (9600bps)
<b>GPRS Protocol:</b>	Supports TCP/IP stack Class 10, and ASL high efficiency telemetry protocols (ATP)
<b>Network compatibility:</b>	Quad band for use on GSM and GPRS (Class B 4+1) networks at 850/900/1800/1900 MHz
<b>SMS Protocol:</b>	Standard text and PDU modes supported
<b>Error Correction / Data Compression:</b>	V42, V42bis standards for modem and V110 for ISDN and GSM hosted applications
<b>Power Supply:</b>	85 – 265VAC from meter module connector
<b>Weight:</b>	90g
<b>Connectivity:</b>	Via AS230 module connector
<b>Environmental conditions:</b>	-20 to +55°C operating; -20 to +70°C storage. Humidity 0-95% non-condensing
<b>Antenna connector:</b>	SMA connector. PassivSystems™ also stock a range of external antennas to maximize reception (Optional extra).
<b>Approvals:</b>	The product conforms to : 3GPP TS 51.010-1, EN60950, R&TTE Directive 99/5/EC, EMC Directive 89/336/EEC & Low Voltage Directive 73/23/EEC

## Additional information

PassivSystems reserves the right to make changes to its products from time-to-time without notice. When contracting with consumers, our commercial partners are responsible for seeking the home occupant's approval of privacy terms – an example of recommended privacy terms are available upon request.

### PassivSystems Ltd

Medway House, Newbury Business Park  
Newbury, Berkshire RG14 2PZ, United Kingdom  
einfo@passivsystems.com  
[www.passivsystems.com](http://www.passivsystems.com)

